

Factory Prog. 4 Output CMOS Oscillator

- Full Custom Multi-Frequency Programmable Osc
- Reduced EMI by turning off unused output
- Factory Programmable
- Industry-standard packaging saves on board space
- Mult. outputs 1 pkg vs. mult. osc & assoc. comp.
- Lower system cost
- Increased Integration

Applications

- High-end multimedia
- Communications
- Industrial
- A/D converters
- Consumer Applications
- Product differentiation
- Low-power applications

Series **CCE4C**



Part Numbering Example: CCE4C 1A 200.0 / 150.0 / 125.0 / 100.0

CCE4C	1A	200	150	125	100
SERIES	PACKAGE STYLE	FREQUENCY A	FREQUENCY B	FREQUENCY C	FREQUENCY D
	1A=14 pin dip 9=9.6x11.4 SMD	0.2 - 200 MHz	0.2 - 200 MHz	0.2 - 200 MHz	0.2 - 200 MHz

Specifications:	Min	Typ	Max	Unit
Frequency Range:				
Output A CMOS	0.2		200	MHz
Output B CMOS	0.2		200	MHz
Output C CMOS	0.2		200	MHz
Output D CMOS	0.2		200	MHz
Available Stability Options:	-50		50	ppm
Supply Voltage:	3.135	3.3	3.465	V
Operating Temperature Range Options:	-40		85	°C
Storage Temperature:	-55		125	°C
Duty Cycle:	40 45		60 55	% %
Start-Up Time:		3	10	mS
Aging (PPM/1st Year): Ta=25C, Vdd=3.3V			±5	
Static Discharge Voltage Mil-Std 883, method 3015	2000			V
Output Load: CMOS, < 40 MHz CMOS, ≥ 40 MHz			30 15	pF pF
Output Level:	CMOS			
Packaging:	25 / Tube Tape & Reel			14 pin SMD

Notes: Recommended .01 µF bypass capacitor from Vcc to GND. Capacitor should be as close to oscillator as possible.

Cardinal Components, Inc., 155 Rt. 46 W, Wayne, NJ. 07470 TEL: (973)785-1333 FAX: (973)785-0053
<http://www.cardinalxtal.com> E-Mail: cardinal@cardinalxtal.com

Specifications subject to change without notice. Check website for latest updates



Factory Prog. 4 Output CMOS Oscillator

Series **CCE4C****Electrical Characteristics**

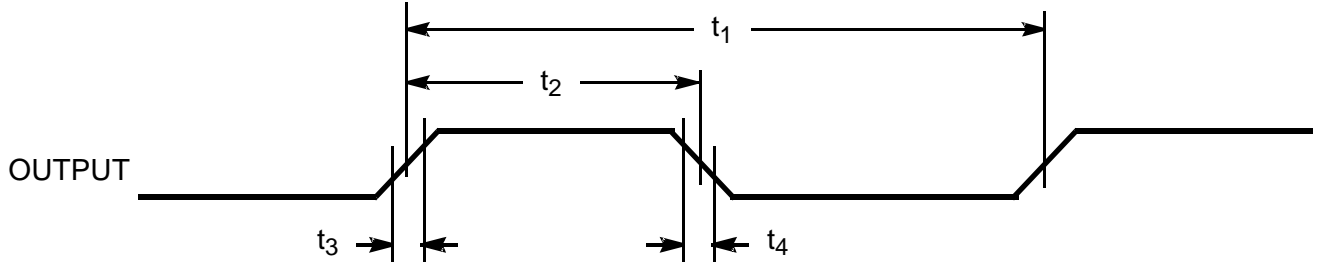
DESCRIPTION		CONDITIONS	MIN	TYP	MAX	UNIT
Ioh	Output High Current	Voh = (L)Vdd - 0.5, (L)Vdd = 3.3 V	12	24		mA
Iol	Output Low Current	Vol = .5, (L)Vdd = 3.3 V	12	24		mA
Vih	High Level Input Voltage	CMOS levels, % of Vdd	0.7			V
Vil	Low-Level Input Voltage	CMOS levels, % of Vdd			0.3	V
Iih	Input High Current	Vin = AVdd - 0.3 V		<1	10	μA
Iil	Input Low Current	Vin = + 0.3 V		<1	10	μA
Ioz	Output Leakage Current	tri-state outputs			10	μA
Idd	Total Power Supply Current	Example 1: 1 output@19.44 MHz; 1 output@38.88 MHz 1 output@77.76 Mhz; 1 output@155.52 MHz Example 2: 1 output@50 MHz; 1 output@106.25 MHz 1 output@200 Mhz; 1 output@155.52 MHz		26 38		mA mA
Idds	Shutdown Power Supply Curr	Shutdown active		5	20	μA

Output Clock Switching Characteristics

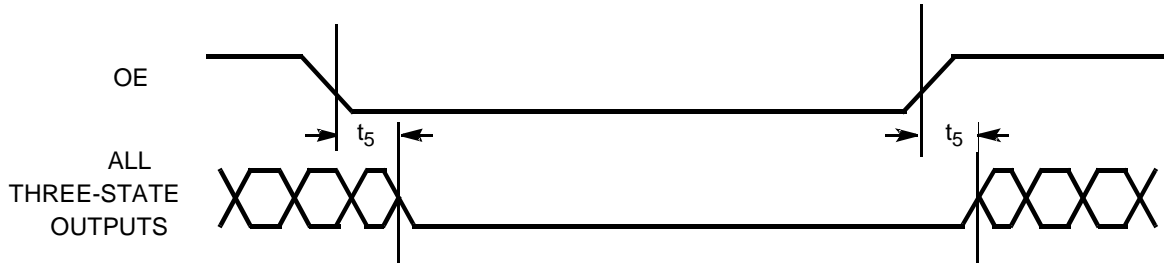
DESCRIPTION		CONDITIONS	MIN	TYP	MAX	UNIT
1/t1	Output Frequency	Clock output limit, CMOS, Commercial			200	MHz
t3	Rising Edge Slew Rate	Output clock rise time, 20% – 80% Vdd	0.75	1.4		nS
t4	Falling Edge Slew Rate	Output clock fall time, 20% – 80% Vdd	0.75	1.4		nS
t5	Output tri-state timing after SD/OE switches	Time for output to enter/leave tri-state mode		150	300	nS
t6	Clock Jitter measured at Vdd/2	Peak-to-Peak period jitter, CLK outputs		200		pS



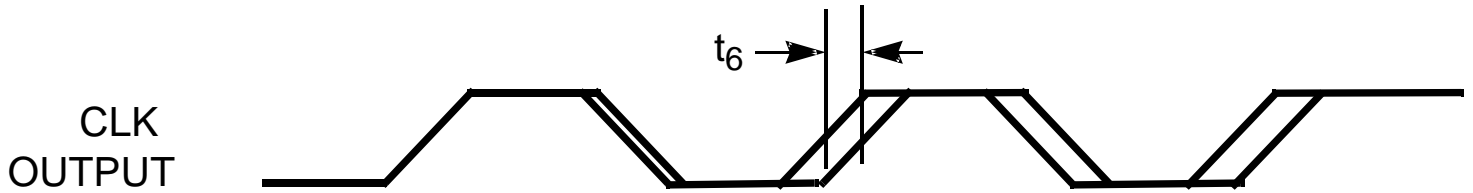
ALL OUTPUTS, DUTY CYCLE, RISE/FALL TIME



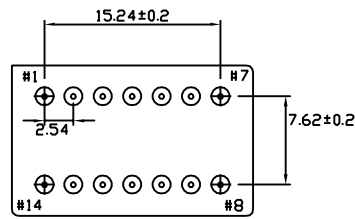
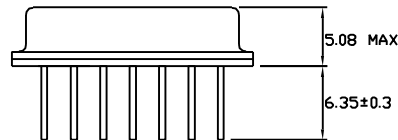
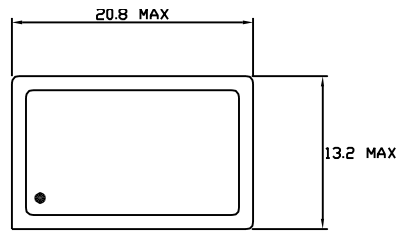
OUTPUT 3-STATE TIMING



CLK OUTPUT JITTER



DIP

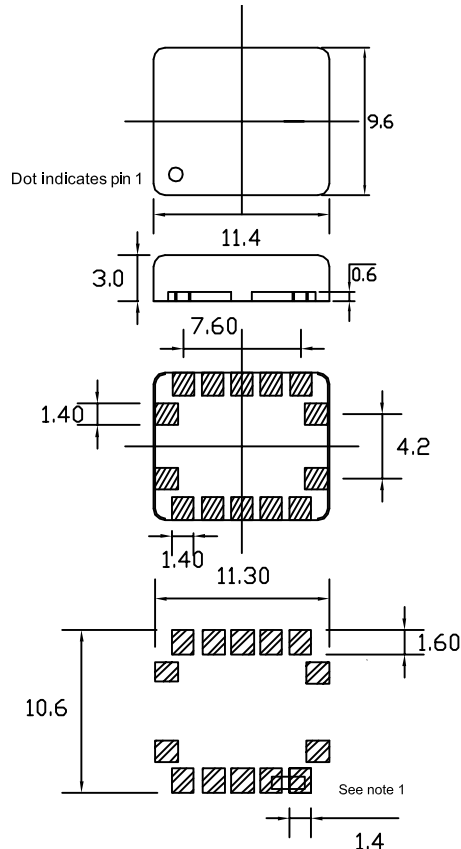


Dimensions are in mm

PIN FUNCTION

- PIN 1 OE (CONNECT TO VDD)
- PIN 2 SUSPEND (CONNECT TO GND)
- PIN 3 VDD
- PIN 4 CLK C OUTPUT
- PIN 5 CONNECT TO PIN 6
- PIN 6 CONNECT TO PIN 5
- PIN 7 GND
- PIN 8 FACTORY USE (MAKE NO CONNECTION)
- PIN 9 CLK D OUTPUT
- PIN10 FACTORY USE (MAKE NO CONNECTION)
- PIN 11 FACTORY USE (MAKE NO CONNECTION)
- PIN 12 FACTORY USE (MAKE NO CONNECTION)
- PIN 13 CLK A OUTPUT
- PIN 14 CLK B OUTPUT

SMD



PIN FUNCTION

- PIN 1 FACTORY USE (MAKE NO CONNECTION)
- PIN 2 OE
- PIN 3 VDD
- PIN 4 CLK C OUTPUT
- PIN 5 CONNECT TO PIN 6
- PIN 6 CONNECT TO PIN 5
- PIN 7 GND
- PIN 8 FACTORY USE (MAKE NO CONNECTION)
- PIN 9 CLK D OUTPUT
- PIN10 FACTORY USE (MAKE NO CONNECTION)
- PIN 11 FACTORY USE (MAKE NO CONNECTION)
- PIN 12 FACTORY USE (MAKE NO CONNECTION)
- PIN 13 CLK A OUTPUT
- PIN 14 CLK B OUTPUT

Dimensions in mm
Recommended solder pad layout

Note1:
For proper operation pin 5 must be connected to pin 6

